

Announcing The **New** 4-in-1

- 1 Deed-Chek™ 8.0
- 2 Subdivide™ 8.0
- 3 Deed-Writer™
- 4 Multi-Media Tutorials

Upgrade Now for as little as \$99.00!

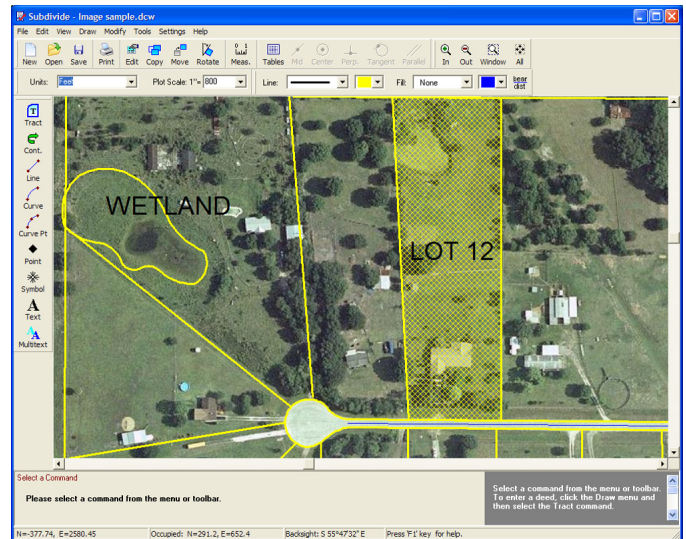
Look What's New in Version 8.0

- **Enter Deeds by Section, Township & Range**
Deed-Chek 8.0 now supports entering parcels as section, township & range, as well as metes and bounds.
- **Insert Aerial and Topo background images**
Subdivide 8.0 now supports aerial and topographic background images.
- **New "Site Calculator" calculates lot coverage**
The new Site Calculator calculates the maximum number of lots you can get out of a parcel in seconds.
- **Insert Curve Tables into the Drawing**
Now you can include line and curve tables right in the drawing, as well as on a separate page.
- **Sideshots**
Sideshot feature allows for pin pointing trees, fences, and other items on the lot.
- **Changeable Text Sizes**
Easy text sizing allows users to pick the size of text and annotations on the drawing.
- **Detailed Multi-Media Tutorials**
Live multi-media tutorials lets you sit back and let the instructor teach you how to draw a plat, analyze a deed, estimate the maximum number of lots, and subdivide a large parcel of land into smaller lots.

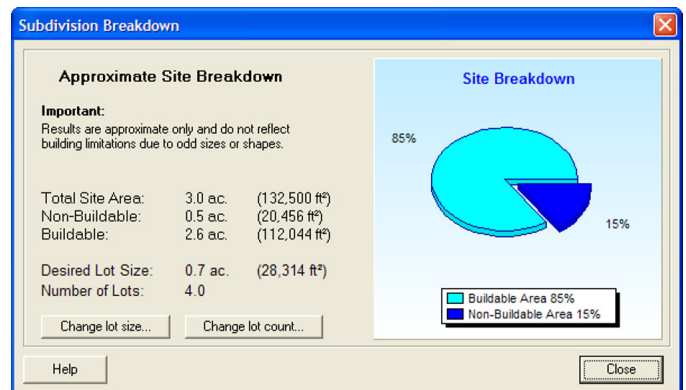
No More CD-ROM!

You told us, and we listened... Deed-Chek 8.0 no longer requires that you keep the CD-ROM in your computer when you use it.

Now enjoy the convenience of using Deed-Chek whenever you wish, without having to worry about keeping the CD-ROM in your computer.

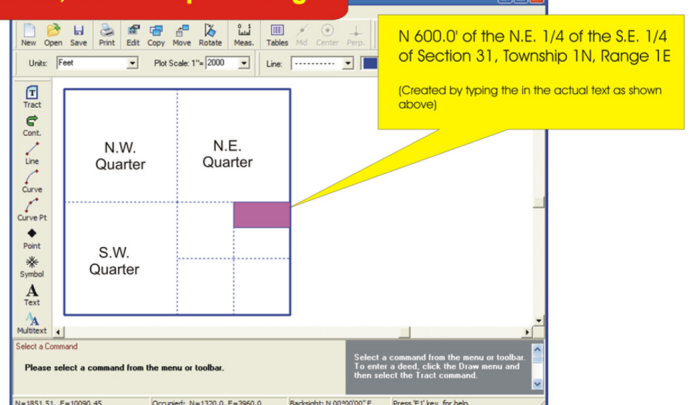


Insert aerial photographs or topo images into the drawing, then trace features such as wetlands, roads, fence lines, building outlines, parking lots, etc. Build your entire design right on top of the image!



The new "Site Calculator" helps cut down on the guesswork when subdividing a parcel of land. Simply click on the parcel you wish to subdivide, then click on the non-buildable areas such as roads and wetlands, then enter the desired size for your lots. Subdivide 8.0 then tells you how many lots you have room for. Or, tell it how many lots you want and Subdivide 8.0 will tell you now big they must be!

Section, Township & Range!



Now you can easily enter rectangular descriptions like "The N.E. 1/4 of the S.E. 1/4 of". Simply type in the description just like it appears and Deed-Chek will draw it for you. No need to remember special formats or abbreviations, Deed-Chek will do the hard work for you. (The parcel shown on the left was created by entering "N 600.0' of the N.E. 1/4 of the S.E. 1/4 of Section 31, Township 1N, Range 1E".)

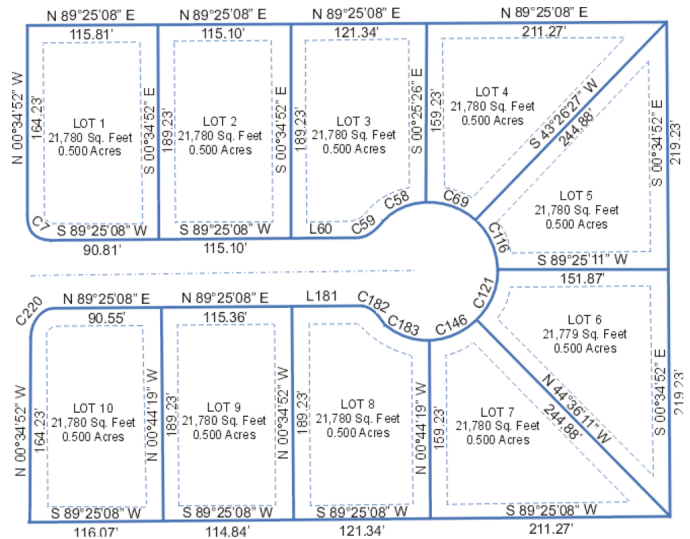
Subdivide 8.0

Subdivide 8.0 helps you to quickly and easily enter and analyze deeds, surveys and other land information. In addition, new tools make it easier than ever to plan and design subdivisions.

Subdivide 8.0 is also easier than ever to learn and use. Multi-media tutorials are included to teach you the program and even walk you through real-world scenarios.

Main Features:

- Simple deed entry
- Plots on screen as you go
- Checks area and closure
- Checks for encroachments
- Plots adjoining plats, checks for overlaps, calculates the area of overlap
- Measures distance and bearing between any two points
- Draws curves with ease
- Draws house pad, trees, shrubs,
- and improvements
- Draws easements, setbacks, utility lines, and North arrow
- Places annotations alongside lines and curves automatically
- Paints lots in different colors and hatch patterns
- Solves for unknown courses
- Adjusts discrepancies
- Plots final plat to scale on printer

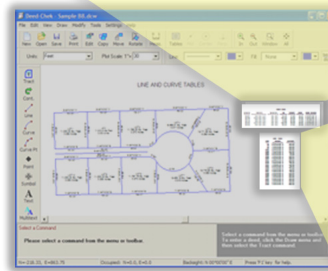


Subdivision created with Subdivide 8.0

Now Include Curve and Line Tables Right in your Drawing!

Previously, you had to print line and curve information on a separate sheet of paper. Now you can put these tables right in the drawing. Once its in the drawing, you can move or rotate it just like any other object in the drawing. You can even change the text size.

| CURVE | DELTA | RADIUS | ARC | TANGENT | CHORD | CHORD BEARING |
|-------|------------|--------|---------|---------|--------|---------------|
| C127 | 60°05'14" | 30.00' | 31.46' | 17.35' | 30.04' | N 58°37'53" W |
| C132 | 110°00'00" | 60.00' | 115.19' | 85.69' | 98.30' | N 83°37'25" E |
| C140 | 39°59'16" | 60.00' | 41.88' | 21.83' | 41.03' | S 21°22'15" E |
| C149 | 39°59'16" | 60.00' | 41.88' | 21.83' | 41.03' | S 18°37'01" W |
| C155 | 110°00'00" | 60.00' | 115.19' | 85.69' | 98.30' | N 86°23'21" W |
| C160 | 60°03'05" | 30.00' | 31.44' | 17.34' | 30.02' | N 61°17'57" W |



| LINE | BEARING | DISTANCE |
|------|---------------|----------|
| L1 | N 88°40'30" E | 100.00' |
| L2 | N 01°19'30" W | 110.00' |
| L3 | S 88°40'30" W | 100.00' |
| L4 | S 01°19'30" E | 110.00' |
| L121 | N 88°40'30" E | 100.00' |
| L122 | N 01°19'30" W | 110.00' |
| L123 | S 88°40'30" W | 100.00' |
| L126 | N 88°40'30" E | 82.02' |
| L128 | N 01°19'30" W | 94.36' |
| L129 | S 88°40'30" W | 109.01' |
| L133 | N 31°00'00" E | 102.15' |
| L134 | S 88°40'30" W | 152.54' |
| L141 | N 88°44'41" E | 110.01' |
| L142 | N 01°19'30" W | 125.00' |
| L143 | S 88°40'30" W | 69.45' |
| L150 | S 33°32'40" E | 102.32' |
| L151 | N 88°40'30" E | 69.45' |
| L152 | N 01°19'30" W | 125.00' |
| L156 | S 01°19'30" W | 94.98' |
| L157 | N 88°40'30" E | 152.54' |

Place Line and Curve tables right inside the drawing.

Line and Curve Tables:

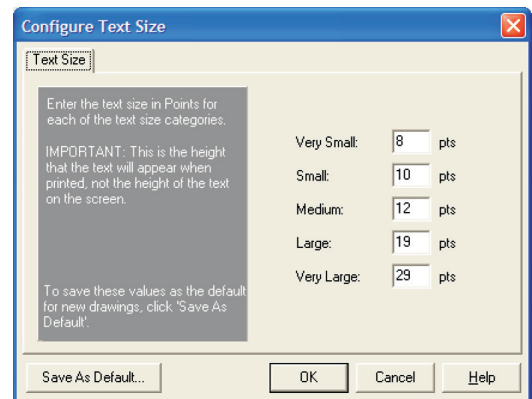
- Place line and curve tables in the drawing.
- Tables can be located wherever you wish.
- Edit tables using regular move, rotate and nudge commands.
- Text in tables can be fully edited.
- Text size of tables is changeable.

Change Text Sizes

- Pre-defined text sizes for quick and easy operation.
- All text sizes are completely changable to suit your individual needs.
- Text sizes are specified in Points making it easy for you to plan how your drawing will look with it is printed.
- Deed-Chek automatically shows you how large your text

Very Large
Large
Medium
Small
Very Small

will be based on the current plot scale and point size of the text. "What you see is what you get!"



All text sizes are changeable, if desired.

To Order,
Call 1-800-548-9223
or visit www.deedchek.com
or send enclosed coupon with payment.