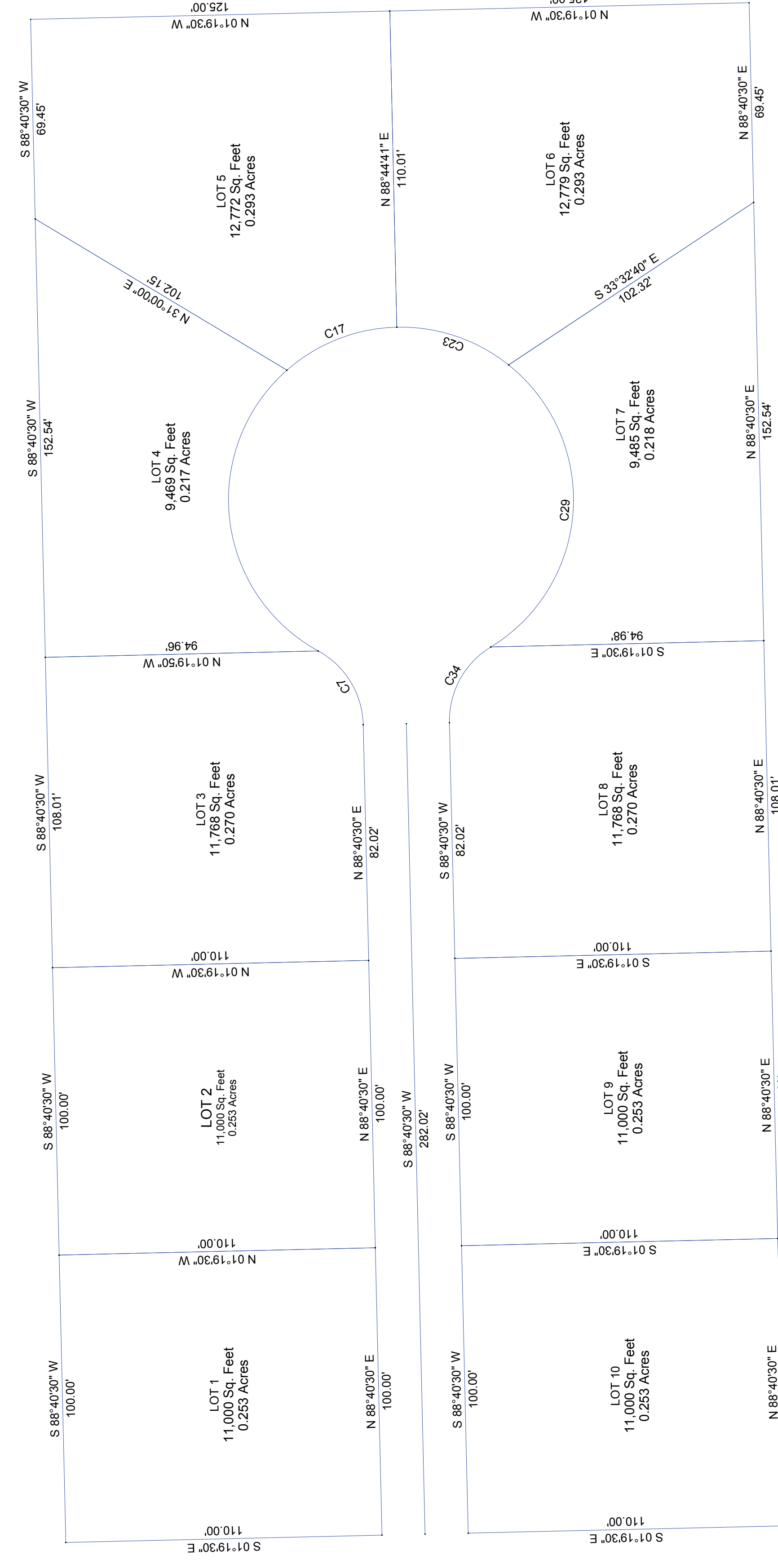


LINE AND CURVE TABLES



CURVE	DELTA	RADIUS	ARC	TANGENT	CHORD	CHORD BEARING
C132	110°00'00"	60.00'	115.15'	85.65'	98.30'	N 83°31'25" E
C140	39°59'16"	60.00'	41.88'	21.83'	41.03'	S 22°22'55" E
C155	110°00'00"	60.00'	115.15'	85.65'	98.30'	N 88°23'31" W
C160	60°03'05"	30.00'	31.44'	17.34'	30.02'	N 61°17'57" W

LINE	BEARING	DISTANCE
L1	N 01°19'30" W	110.00'
L2	S 88°40'30" E	100.00'
L3	S 88°40'30" E	100.00'
L21	N 88°40'30" E	100.00'
L22	S 88°40'30" W	100.00'
L23	S 88°40'30" W	100.00'
L24	N 01°19'30" E	94.86'
L25	S 88°40'30" W	125.00'
L26	S 88°40'30" W	122.34'
L27	N 01°19'30" E	125.00'
L28	S 88°40'30" E	100.00'
L29	S 88°40'30" E	102.32'
L30	S 88°40'30" E	102.32'
L31	N 01°19'30" E	125.00'
L32	S 88°40'30" E	125.00'
L33	S 88°40'30" E	125.00'
L34	S 88°40'30" E	125.00'
L35	S 88°40'30" E	125.00'
L36	S 88°40'30" E	125.00'
L37	S 88°40'30" E	125.00'
L38	S 88°40'30" E	125.00'
L39	S 88°40'30" E	125.00'
L40	S 88°40'30" E	125.00'
L41	S 88°40'30" E	125.00'
L42	S 88°40'30" E	125.00'
L43	S 88°40'30" E	125.00'
L44	S 88°40'30" E	125.00'
L45	S 88°40'30" E	125.00'
L46	S 88°40'30" E	125.00'
L47	S 88°40'30" E	125.00'
L48	S 88°40'30" E	125.00'
L49	S 88°40'30" E	125.00'
L50	S 88°40'30" E	125.00'
L51	S 88°40'30" E	125.00'
L52	S 88°40'30" E	125.00'
L53	S 88°40'30" E	125.00'
L54	S 88°40'30" E	125.00'
L55	S 88°40'30" E	125.00'
L56	S 88°40'30" E	125.00'
L57	S 88°40'30" E	125.00'
L58	S 88°40'30" E	125.00'
L59	S 88°40'30" E	125.00'
L60	S 88°40'30" E	125.00'
L61	S 88°40'30" E	125.00'
L62	S 88°40'30" E	125.00'
L63	S 88°40'30" E	125.00'
L64	S 88°40'30" E	125.00'
L65	S 88°40'30" E	125.00'
L66	S 88°40'30" E	125.00'
L67	S 88°40'30" E	125.00'
L68	S 88°40'30" E	125.00'
L69	S 88°40'30" E	125.00'
L70	S 88°40'30" E	125.00'
L71	S 88°40'30" E	125.00'
L72	S 88°40'30" E	125.00'
L73	S 88°40'30" E	125.00'
L74	S 88°40'30" E	125.00'
L75	S 88°40'30" E	125.00'
L76	S 88°40'30" E	125.00'
L77	S 88°40'30" E	125.00'
L78	S 88°40'30" E	125.00'
L79	S 88°40'30" E	125.00'
L80	S 88°40'30" E	125.00'
L81	S 88°40'30" E	125.00'
L82	S 88°40'30" E	125.00'
L83	S 88°40'30" E	125.00'
L84	S 88°40'30" E	125.00'
L85	S 88°40'30" E	125.00'
L86	S 88°40'30" E	125.00'
L87	S 88°40'30" E	125.00'
L88	S 88°40'30" E	125.00'
L89	S 88°40'30" E	125.00'
L90	S 88°40'30" E	125.00'
L91	S 88°40'30" E	125.00'
L92	S 88°40'30" E	125.00'
L93	S 88°40'30" E	125.00'
L94	S 88°40'30" E	125.00'
L95	S 88°40'30" E	125.00'
L96	S 88°40'30" E	125.00'
L97	S 88°40'30" E	125.00'
L98	S 88°40'30" E	125.00'
L99	S 88°40'30" E	125.00'
L100	S 88°40'30" E	125.00'